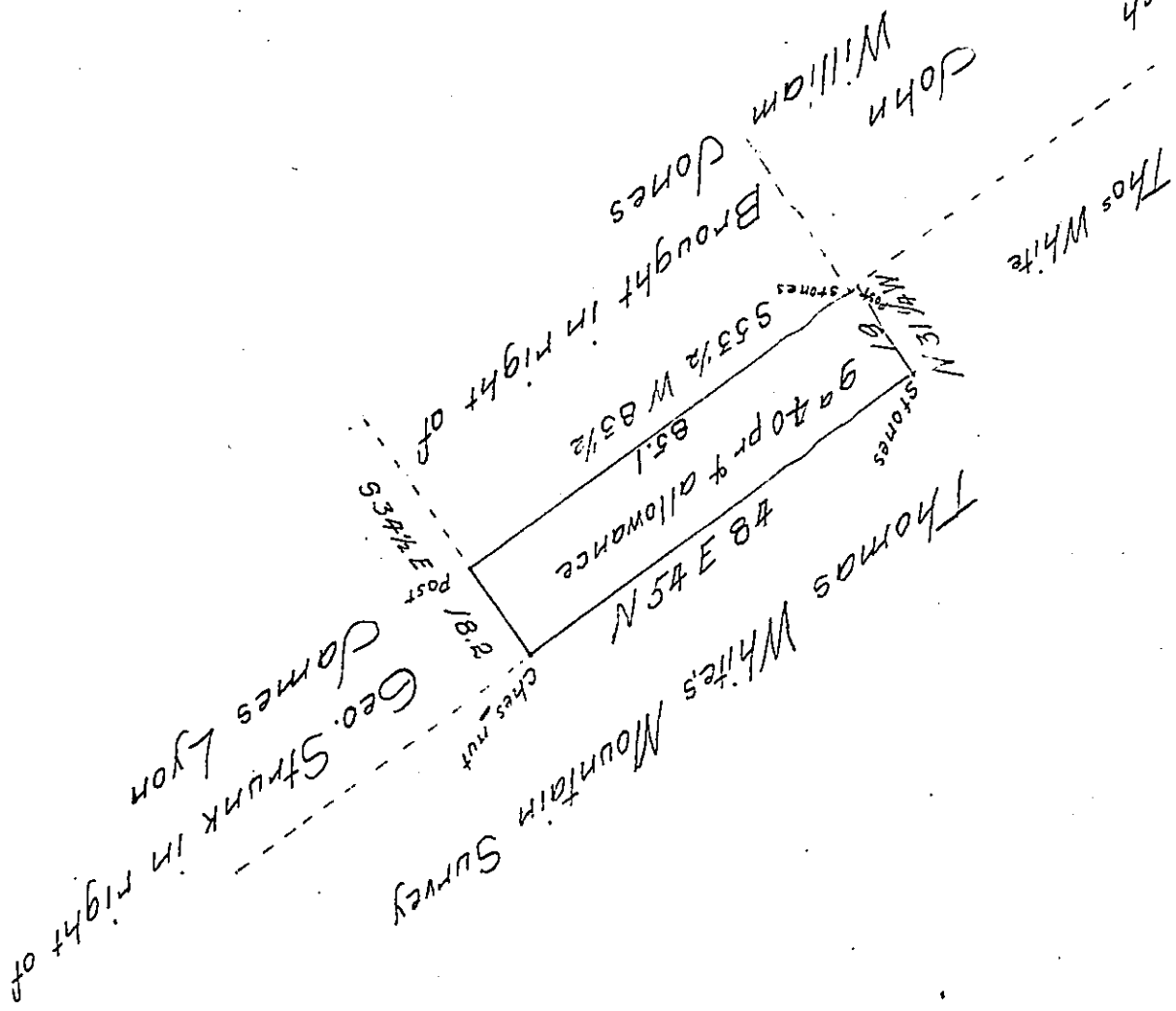


Scale 40 pr to an Inch



A Draught of 99 40 perches of land with allowance of 6 per Cent for Roads &c Situate in Granville Township Mifflin County Penna Surveyed Dec 11<sup>th</sup> & 12<sup>th</sup> 1851 in pursuance of a Warrant to William H. Irwin dated Dec. 30<sup>th</sup> 1850

To J. Porter Brawley Esq.      John R. Weekes C.S.  
 Survr Genl of Penna

IN TESTIMONY that the above is a copy of the original remaining on file in the Department of Internal Affairs of Pennsylvania, made conformably to an Act of Assembly approved the 16th day of February, 1833, I have hereunto set my Hand and caused the Seal of said Department to be affixed at Harrisburg, this Twentieth day of January 1908

*Henry Houch*  
 Secretary of Internal Affairs.